

A coastal landscape featuring a narrow, winding path through a marshy area. The path is covered in light-colored sand or silt, with patches of water and sparse, dry vegetation. The background shows a wide expanse of water and a distant horizon under a sky filled with soft, grey clouds. The overall scene is serene and natural.

# Outer Dowsing Offshore Wind

## Environmental Statement

### Chapter 13 Marine and Intertidal Archaeology

### Volume 2 Figures

Date: March 2024

Document Reference: 6.2.13

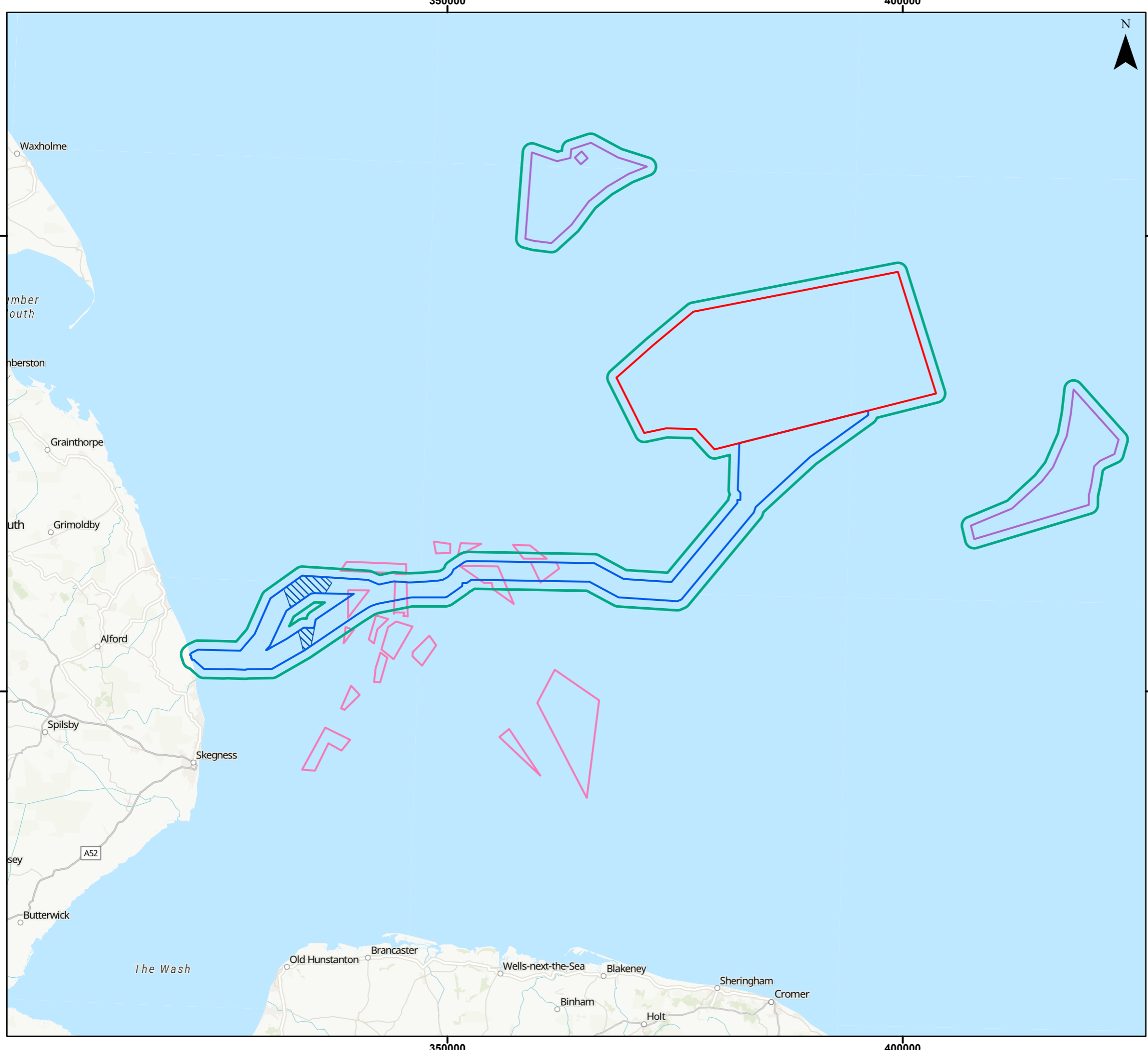
Pursuant to APFP Regulation: 5(2)(a)



Company:	<b>Outer Dowsing Offshore Wind</b>	Asset:	<b>Whole Asset</b>			
Project:	<b>Whole Wind Farm</b>	Sub Project/Package:	Whole Asset			
Document Title or Description:	Chapter 13 Marine and Intertidal Archaeology Figures					
Internal Document Number:	PP1-ODOW-DEV-CS-FIG-0013	3 <sup>rd</sup> Party Doc No (If applicable):	N/A			
Outer Dowsing Offshore Wind accepts no liability for the accuracy or completeness of the information in this document nor for any loss or damage arising from the use of such information.						
Rev No.	Date	Status / Reason for Issue	Author	Checked by	Reviewed by	Approved by
1	March 2024	DCO Application	GoBe	GoBe	Shepherd & Wedderburn	Outer Dowsing

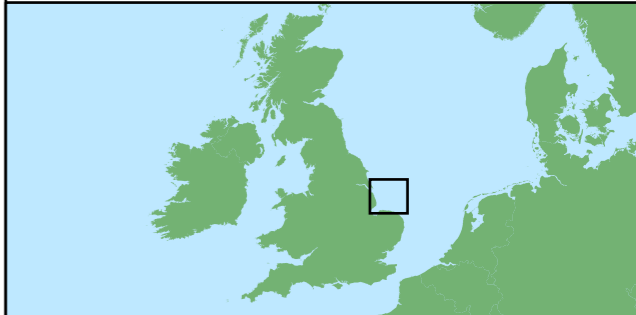
## Table of Figures

- Figure 13.1 Marine Archaeology Study Area (document reference 6.2.13.1)
- Figure 13.2 Known Wrecks and Obstructions within the Marine Archaeology Study Area (document reference 6.2.13.2)
- Figure 13.3 Historic Seascape Characterisation of the Coastal Level (document reference 6.2.13.3)
- Figure 13.4 Historic Seascape Characterisation of the Sea Surface Level (document reference 6.2.13.4)
- Figure 13.5 Historic Seascape Characterisation of the Water Column Level (document reference 6.2.13.5)
- Figure 13.6 Historic Seascape Characterisation of the Seafloor Level (document reference 6.2.13.6)
- Figure 13.7 Historic Seascape Characterisation of the Sub Seafloor Level (document reference 6.2.13.7)
- Figure 13.8 Geophysical Anomalies of Archaeological Potential (document reference 6.2.13.8)
- Figure 13.9 Records and Geoarchaeological Features within the Array Area (document reference 6.2.13.9)
- Figure 13.10 AEZs Recommended for Recorded Wrecks, Obstructions, High Geophysical Anomalies and Medium Geophysical Anomalies (document reference 6.2.13.10)



**Legend**

- Array Area
- Offshore Export Cable Corridor
- 1km Buffer
- ORCP Area
- Artificial Nesting Structure Area
- Biogenic Reef Restoration Area



Coordinate System: WGS 1984 UTM Zone 31N  
 0 10 20 km  
 Scale: 1:400,000 A3 Page Size

Environmental Statement  
 Marine Archaeology Study Area  
 Figure 13.1



Date: 01/03/2024  
 Produced By: LR  
 Revision: 0.1



Contains ESRI Basemapping;  
 World Topographic Map: Esri  
 UK, Esri, TomTom, Garmin,  
 Foursquare, FAO, METI/NASA,  
 USGS

Document Path: O:\Active\_Tenders\1900 - Goble GIG-Total Outer Dowsing OWP\GIS\ODOWW\_ESR1900\_ODOWW\_ESR1900\_ODOWW\_ESR1900\_ODOWW\_ESR1900

350000

400000



Document Path: O:\Active\_Tenders\1900 - Goble\_GIG-Total Outer Dowsing OWP\GIS\ODOWW\_ESR1900\_ODOWW\_ESR1900\_ODOWW\_ESR1900\_ODOWW\_ESR1900\_ODOWW\_ESR1900\_ODOWW\_ESR1900\_ODOWW\_ESR1900

**Legend**

- Array Area
- Offshore Export Cable Corridor
- 1km Buffer
- ORCP Area
- Artificial Nesting Structure Area
- Biogenic Reef Restoration Area

**Array and ECC Known Archaeology: Period**

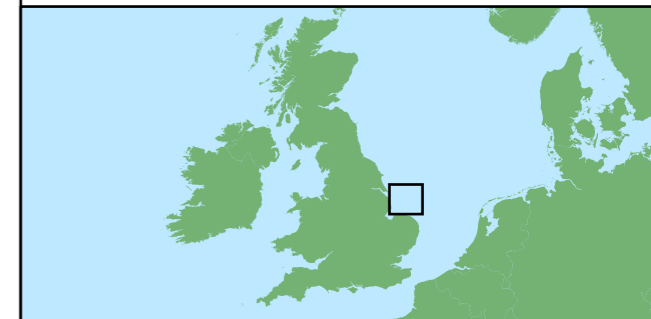
- Foul Ground
- Medieval
- Obstruction
- Post-Medieval
- Post-WWII
- Roman
- Unknown
- WWI
- WWII

**Nesting Area Known Archaeology: Period**

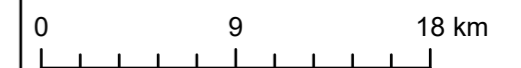
- Early 20th Century
- Foul Ground
- Post-Medieval
- Unknown
- WWI

**Reef Area Known Archaeology: Period**

- Unknown
- WWI
- WWII



Coordinate System: WGS 1984 UTM Zone 31N



Scale: 1:350,000

A3 Page Size

**Environmental Statement**

**Known Wrecks and Obstructions within the Marine Archaeology Study Area**

Figure 13.2



Date: 04/03/2024  
 Produced By: LR  
 Revision: 0.1



Contains ESRI Basemapping;  
 World Topographic Map: Esri  
 UK, Esri, TomTom, Garmin,  
 Foursquare, FAO, METI/NASA,  
 USGS

350000

400000

5950000

0000565

5900000

0000065

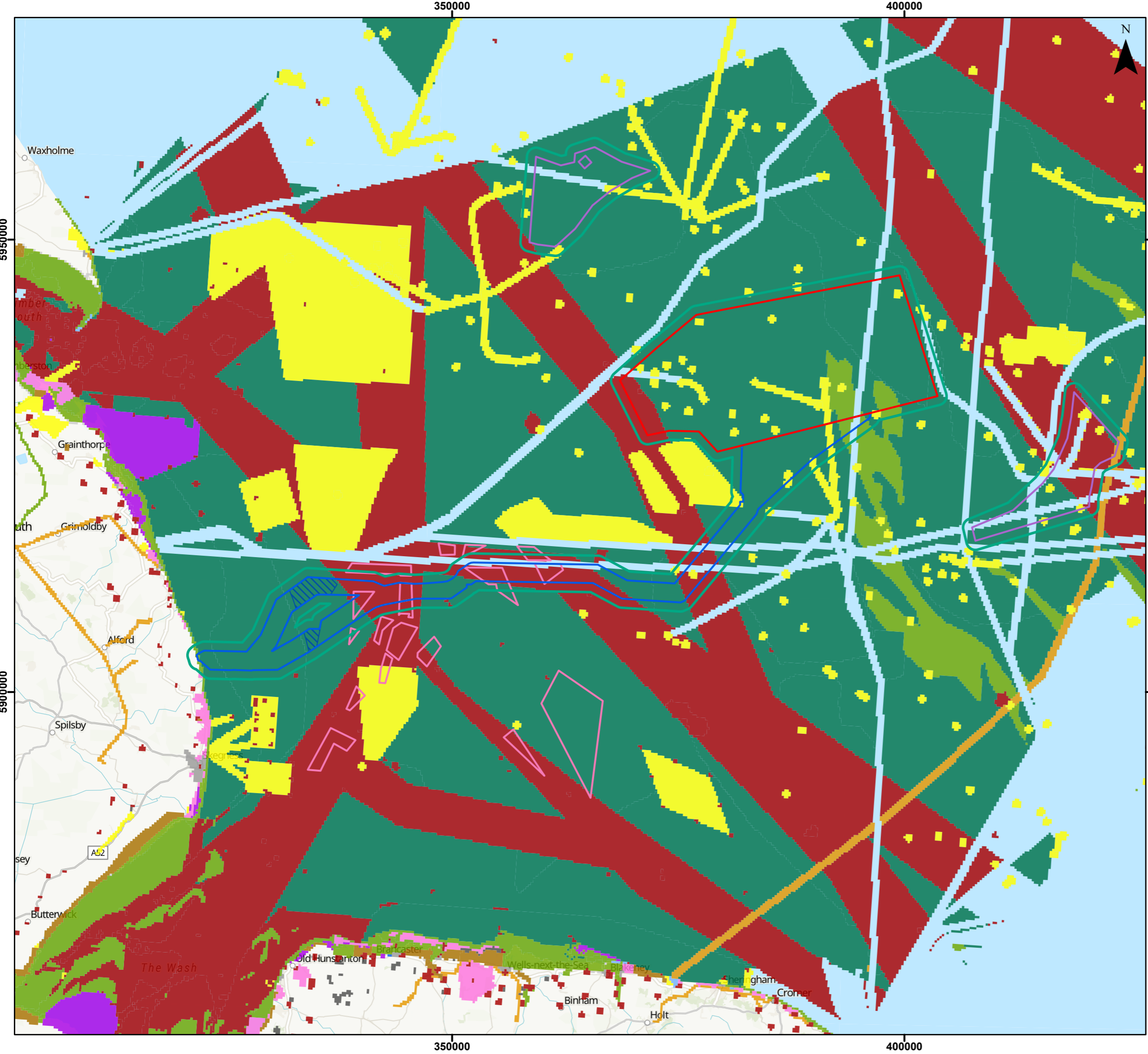
Skegness

Norfolk (Possibly)

Excelsior

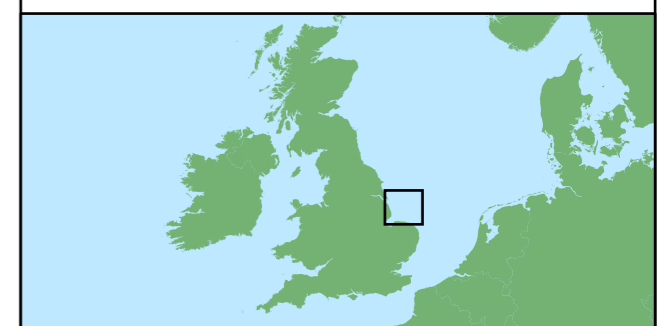
Dauntless (Possibly)





- Legend**
- Array Area
  - Offshore Export Cable Corridor
  - 1km Buffer
  - ORCP Area
  - Artificial Nesting Structure Area
  - Biogenic Reef Restoration Area

- Type**
- Fishing
  - Cultural Topography
  - Ports and Docks
  - Navigation
  - Industry
  - Settlements
  - Woodland
  - Communications
  - Enclosed Land
  - Coastal Infrastructure
  - Military
  - Unimproved Land
  - Recreation



Coordinate System: WGS 1984 UTM Zone 31N  
 0 10 20 km  
 Scale: 1:400,000 A3 Page Size

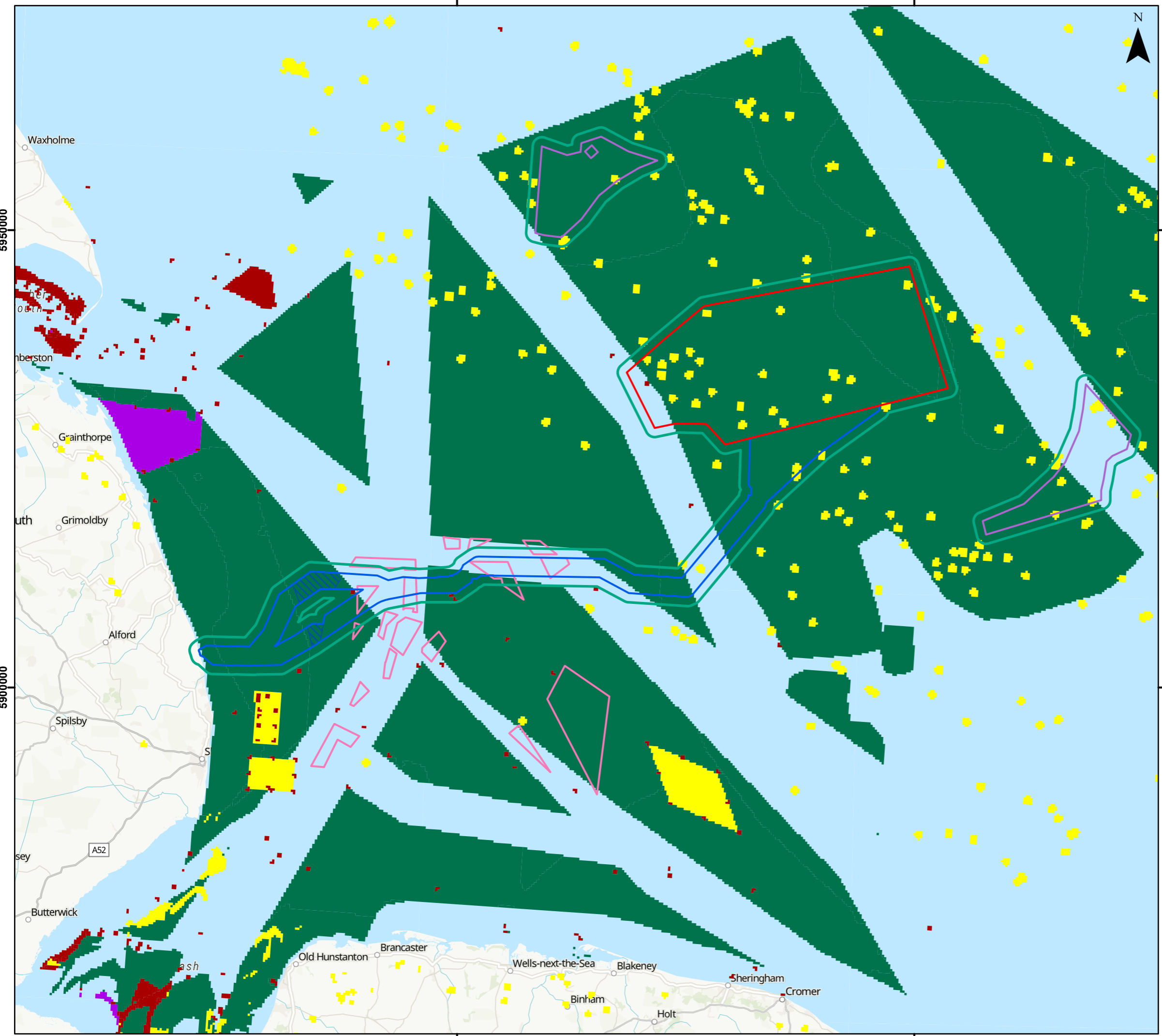
Environmental Statement  
 Historic Seascape Characterisation of the Coastal Level  
 Figure 13.3



Date: 04/03/2024  
 Produced By: LR  
 Revision: 0.1

Contains ESRI Basemapping;  
 World Topographic Map: Esri  
 UK, Esri, TomTom, Garmin,  
 Foursquare, FAO, METI/NASA,  
 USGS

Document Path: O:\Active\_Tenders\1900\_GoBe\_GIG-Trial Outer Dowsing OWP\GIS\ODOW\_ESR1900\_ODOW\_ESR1900\_ODOW\_ESR1900\_ODOW\_ESR1900

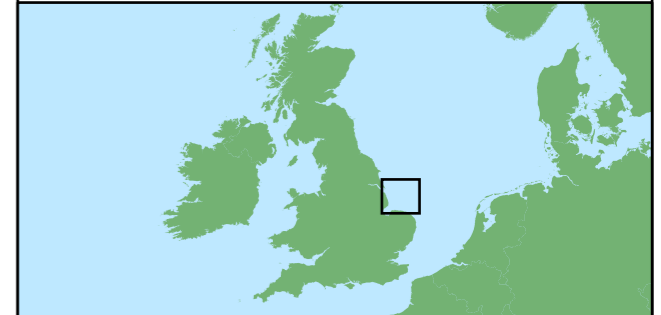


**Legend**

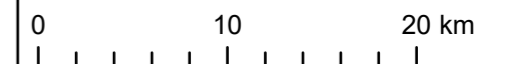
- Array Area
- Offshore Export Cable Corridor
- 1km Buffer
- ORCP Area
- Artificial Nesting Structure Area
- Biogenic Reef Restoration Area

**Type**

- Fishing
- Navigation
- Industry
- Military
- Recreation



Coordinate System: WGS 1984 UTM Zone 31N



Scale: 1:400,000

A3 Page Size

Environmental Statement

Historic Seascape Characterisation of the Sea Surface Level

Figure 13.4



Date: 04/03/2024  
Produced By: LR  
Revision: 0.1

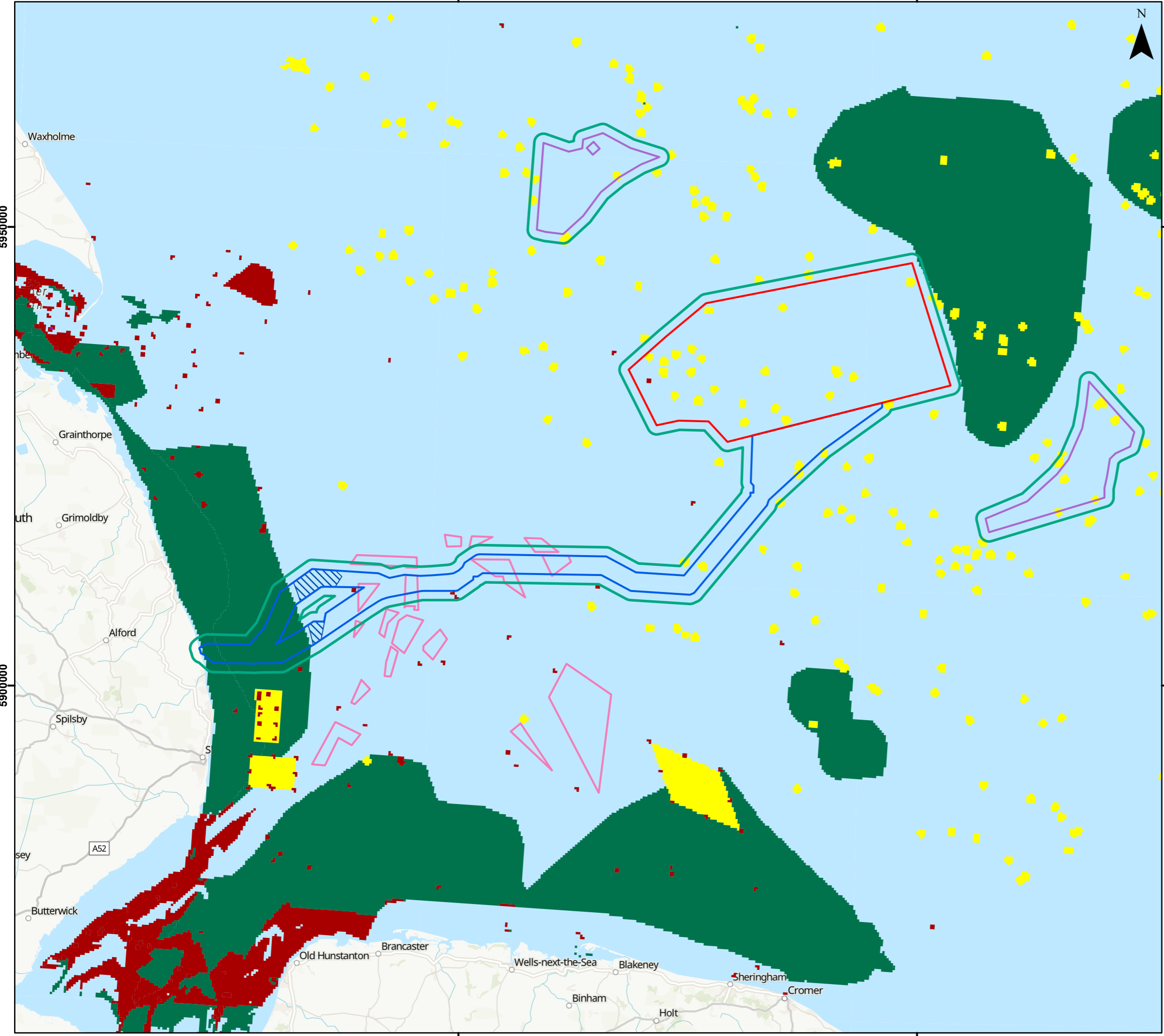


Contains ESRI Basemapping;  
World Topographic Map: Esri  
UK, Esri, TomTom, Garmin,  
Foursquare, FAO, METI/NASA,  
USGS



350000

400000

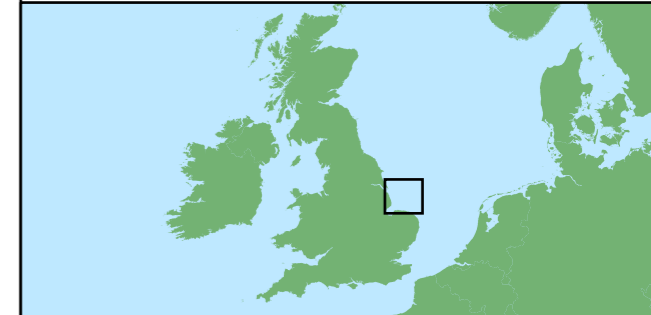


### Legend

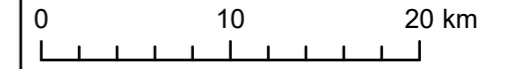
- Array Area
- Offshore Export Cable Corridor
- 1km Buffer
- ORCP Area
- Artificial Nesting Structure Area
- Biogenic Reef Restoration Area

### Type

- Fishing
- Navigation
- Industry
- Military



Coordinate System: WGS 1984 UTM Zone 31N



Scale: 1:400,000

A3 Page Size

### Environmental Statement

Historic Seascape Characterisation of the Water Column Level

Figure 13.5



Date: 04/03/2024  
Produced By: LR  
Revision: 0.1



Contains ESRI Basemapping;  
World Topographic Map: Esri  
UK, Esri, TomTom, Garmin,  
Foursquare, FAO, METI/NASA,  
USGS

350000

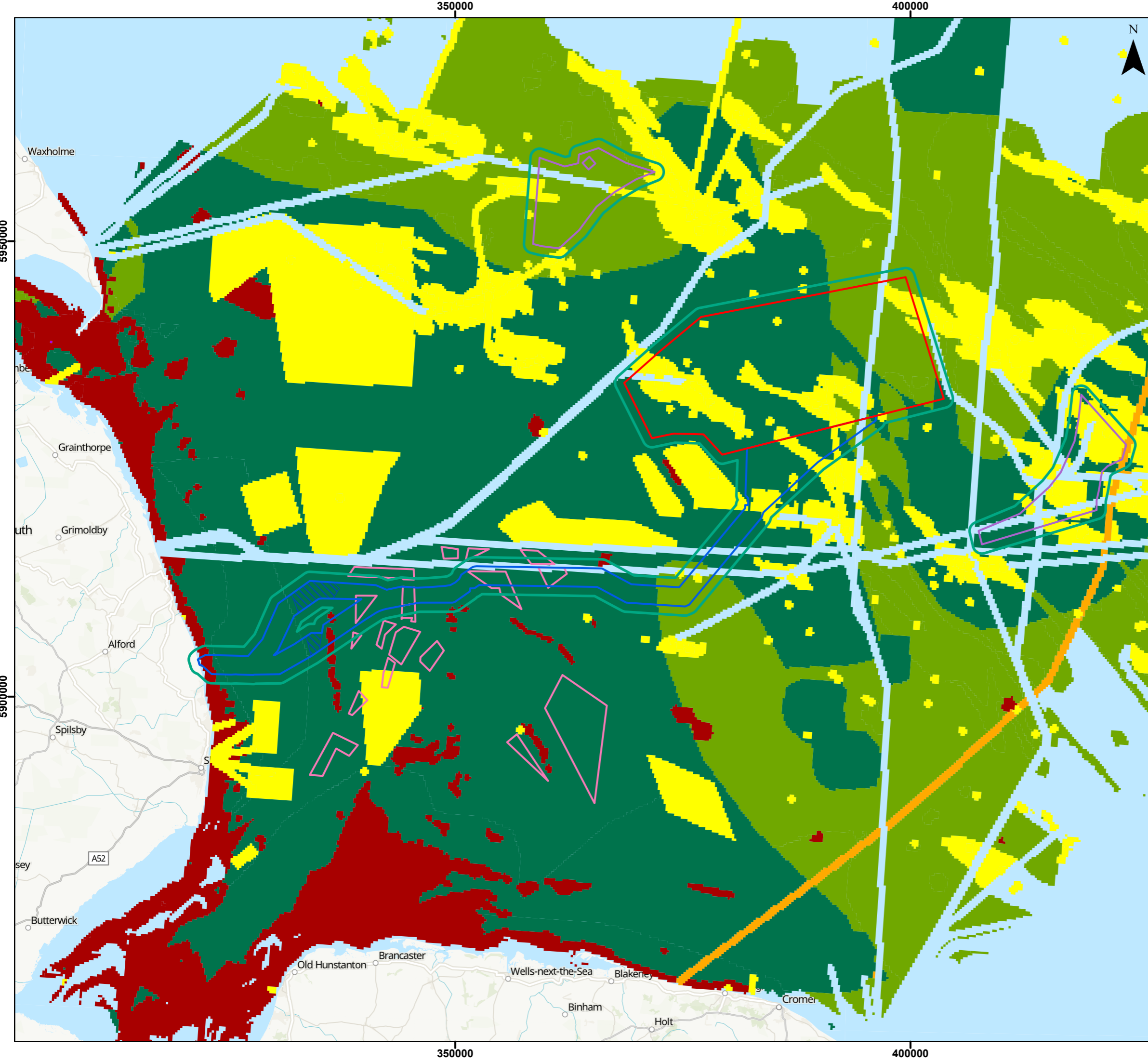
400000

5950000

5950000

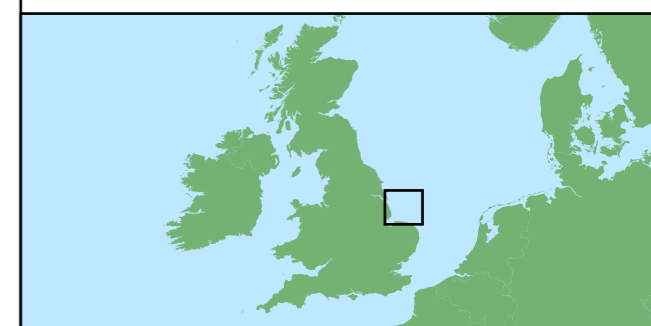
5900000

5900000

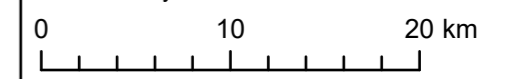


- ### Legend
- Array Area
  - Offshore Export Cable Corridor
  - 1km Buffer
  - ORCP Area
  - Artificial Nesting Structure Area
  - Biogenic Reef Restoration Area

- ### Type
- Fishing
  - Cultural Topography
  - Navigation
  - Industry
  - Communications
  - Military



Coordinate System: WGS 1984 UTM Zone 31N



Scale: 1:400,000

A3 Page Size

Environmental Statement

Historic Seascape Characterisation of the Seafloor Level

Figure 13.6



Date: 04/03/2024  
 Produced By: LR  
 Revision: 0.1

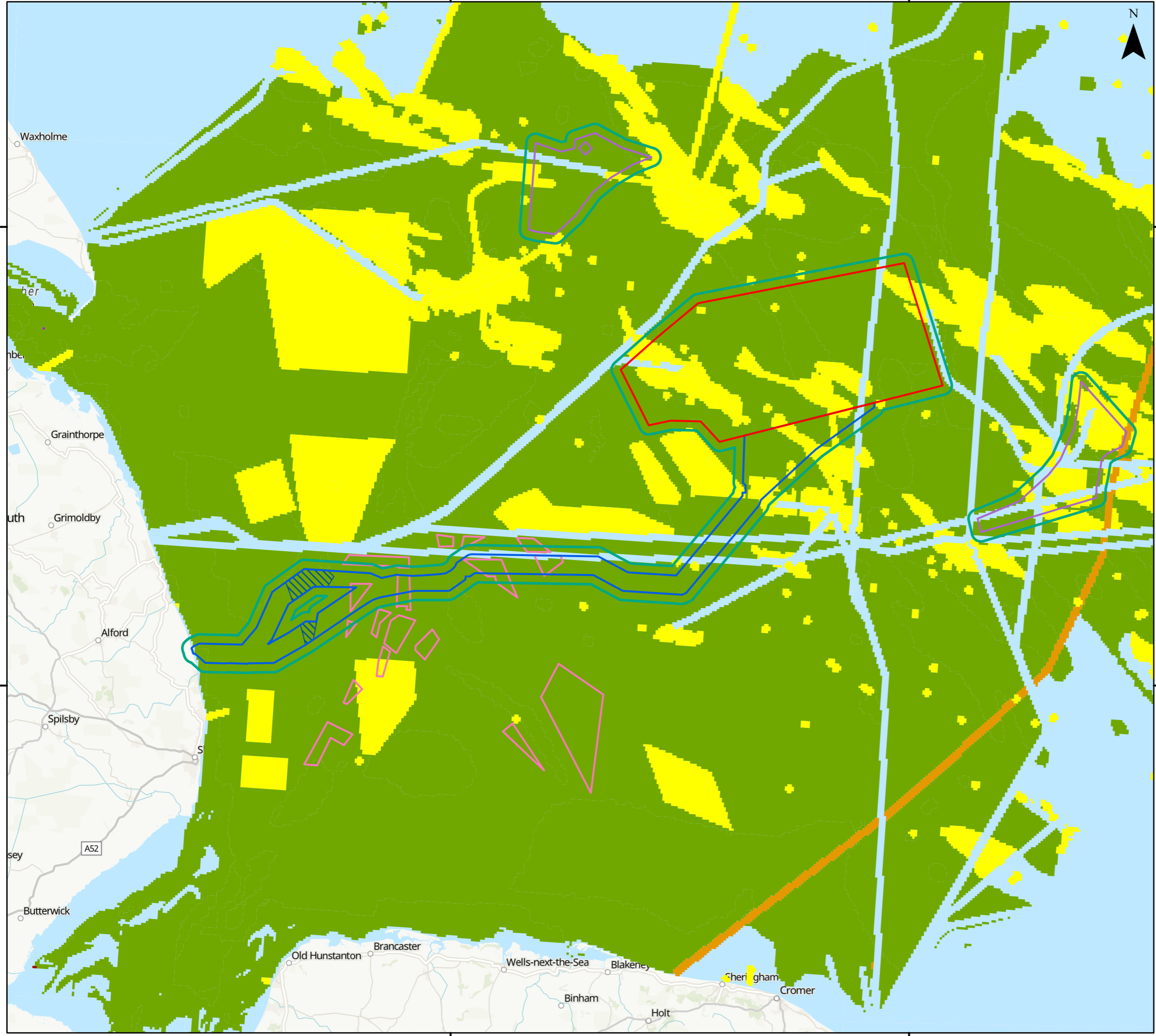


Contains ESRI Basemapping;  
 World Topographic Map: Esri  
 UK, Esri, TomTom, Garmin,  
 Foursquare, FAO, METI/NASA,  
 USGS









350000

400000

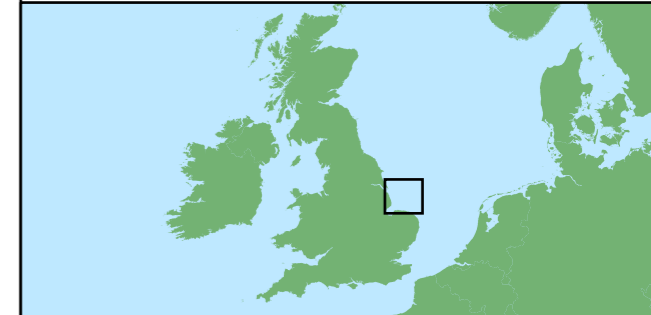


**Legend**

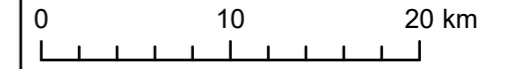
-  Array Area
-  Offshore Export Cable Corridor
-  1km Buffer
-  ORCP Area
-  Artificial Nesting Structure Area
-  Biogenic Reef Restoration Area

**Type**

-  Fishing
-  Cultural Topography
-  Industry
-  Communications
-  Military
-  Navigation



Coordinate System: WGS 1984 UTM Zone 31N



Scale: 1:400,000

A3 Page Size

**Environmental Statement**

Historic Seascape Characterisation of the Sub Seafloor Level

Figure 13.7



Date: 04/03/2024  
Produced By: LR  
Revision: 0.1



Contains ESRI Basemapping;  
World Topographic Map: Esri  
UK, Esri, TomTom, Garmin,  
Foursquare, FAO, METI/NASA,  
USGS

350000

400000

5950000

0000669

5900000

0000669



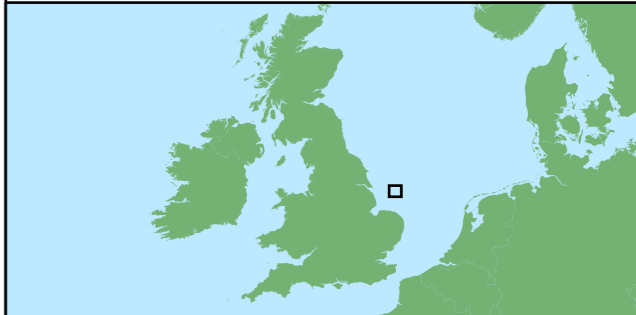
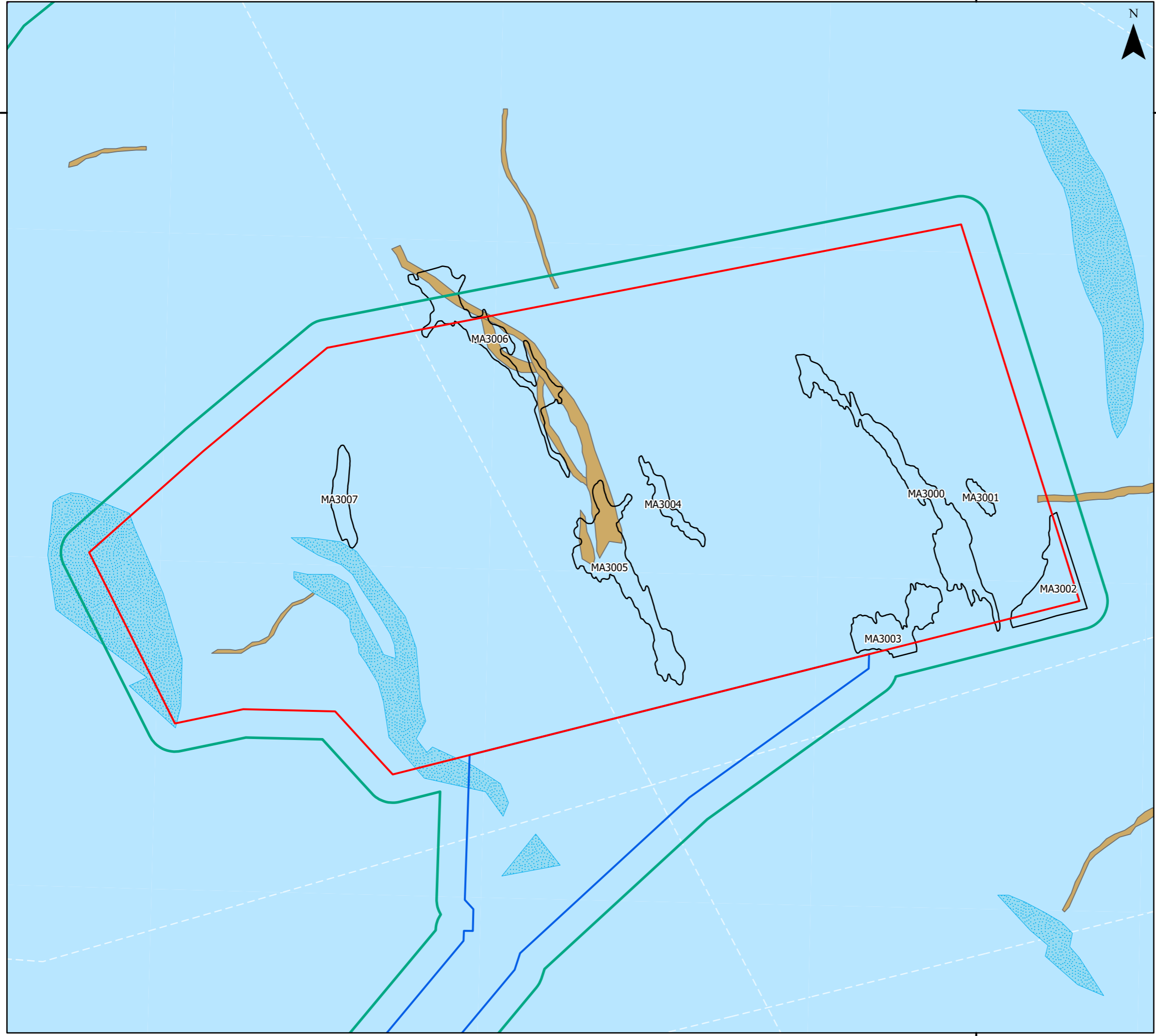


400000

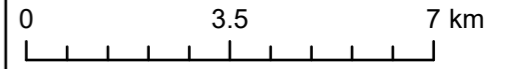


5950000

- Legend**
- Array Area
  - Offshore Export Cable Corridor
  - 1km Buffer
  - SBP Palaeochannels (MA3000-MA3007)
  - NSPP Lakes
  - NSPP Fluvial Channels



Coordinate System: WGS 1984 UTM Zone 31N



Scale: 1:130,000 A3 Page Size

Environmental Statement

Records and Geoarchaeological Features within the Array Area

Figure 13.9



Date: 01/03/2024  
 Produced By: LR  
 Revision: 0.1



Contains ESRI Basemapping;  
 World Topographic Map: Esri  
 UK, Esri, TomTom, Garmin,  
 Foursquare, GeoTechnologies,  
 Inc, MET/NASA, USGS

400000

5950000







Document Path: O:\Active\_Tenders\1900 - Goble GIG-Total Outer Dowsing OWP\GIS\ODOW\_ESR1900\_ODOW\_ESR1900\_ODOW\_ESR1900\_ODOW\_ESR1900

350000



400000

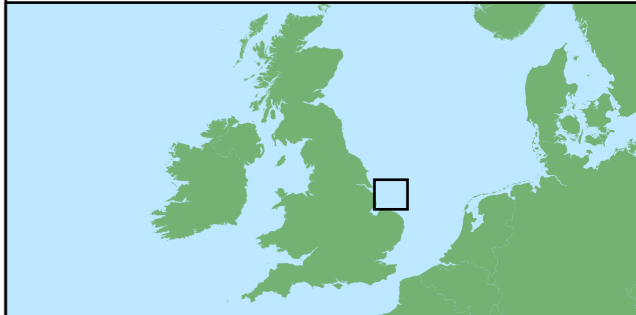


**Legend**

-  Array Area
-  Offshore Export Cable Corridor
-  1km Buffer
-  ORCP Area
-  Artificial Nesting Structure Area
-  Biogenic Reef Restoration Area

**AEZs (meters)**

-  50
-  100



Coordinate System: WGS 1984 UTM Zone 31N



Scale: 1:350,000 A3 Page Size

**Environmental Statement**

AEZs Recommended for Recorded Wrecks, Obstructions, High Geophysical Anomalies and Medium Geophysical Anomalies within the Array Area and Offshore ECC  
Figure 13.10



Date: 04/03/2024  
Produced By: LR  
Revision: 0.1



Contains ESRI Basemapping,  
World Topographic Map: Esri  
UK, Esri, TomTom, Garmin,  
Foursquare, FAO, METI/NASA,  
USGS

5950000

0009665

5900000

0000665

350000

400000

Skegness

Document Path: O:\Active\_Tenders\1900 - Goble GIG-Total Outer Dowsing OWP\GIS\ODOWW\_ESR1900\_ODOWW\_ESR1900\_ODOWW\_ESR1900\_ODOWW\_ESR1900